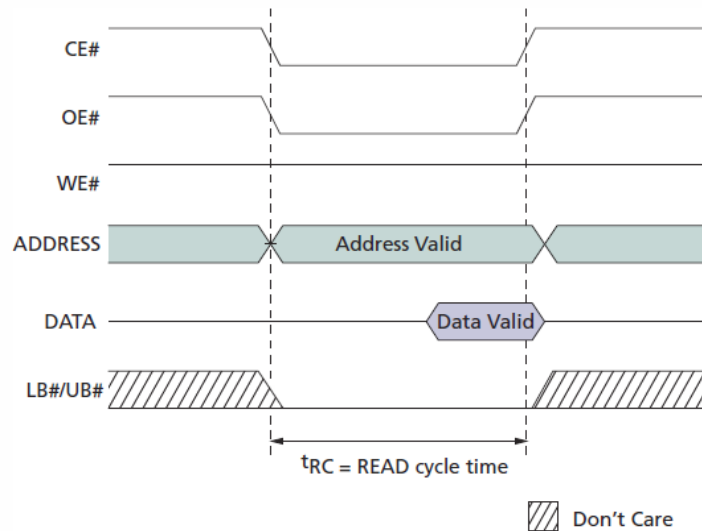
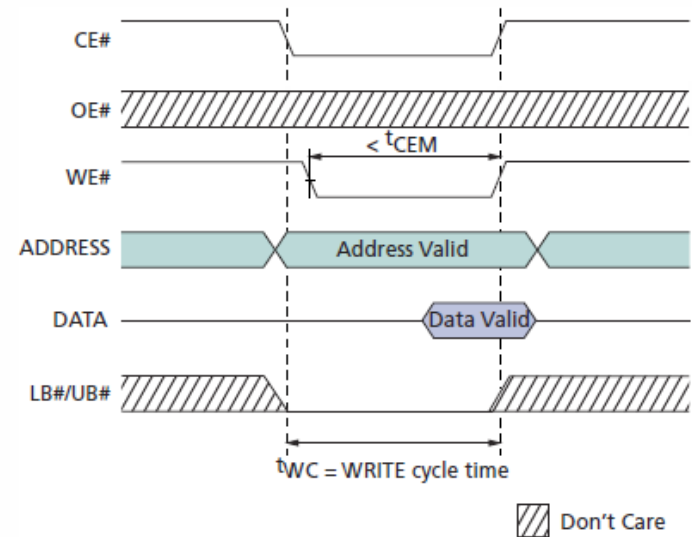


# Micron Cellular RAM Asynchronous Access

**READ Operation (ADV# LOW)**



**WRITE Operation (ADV# LOW)**

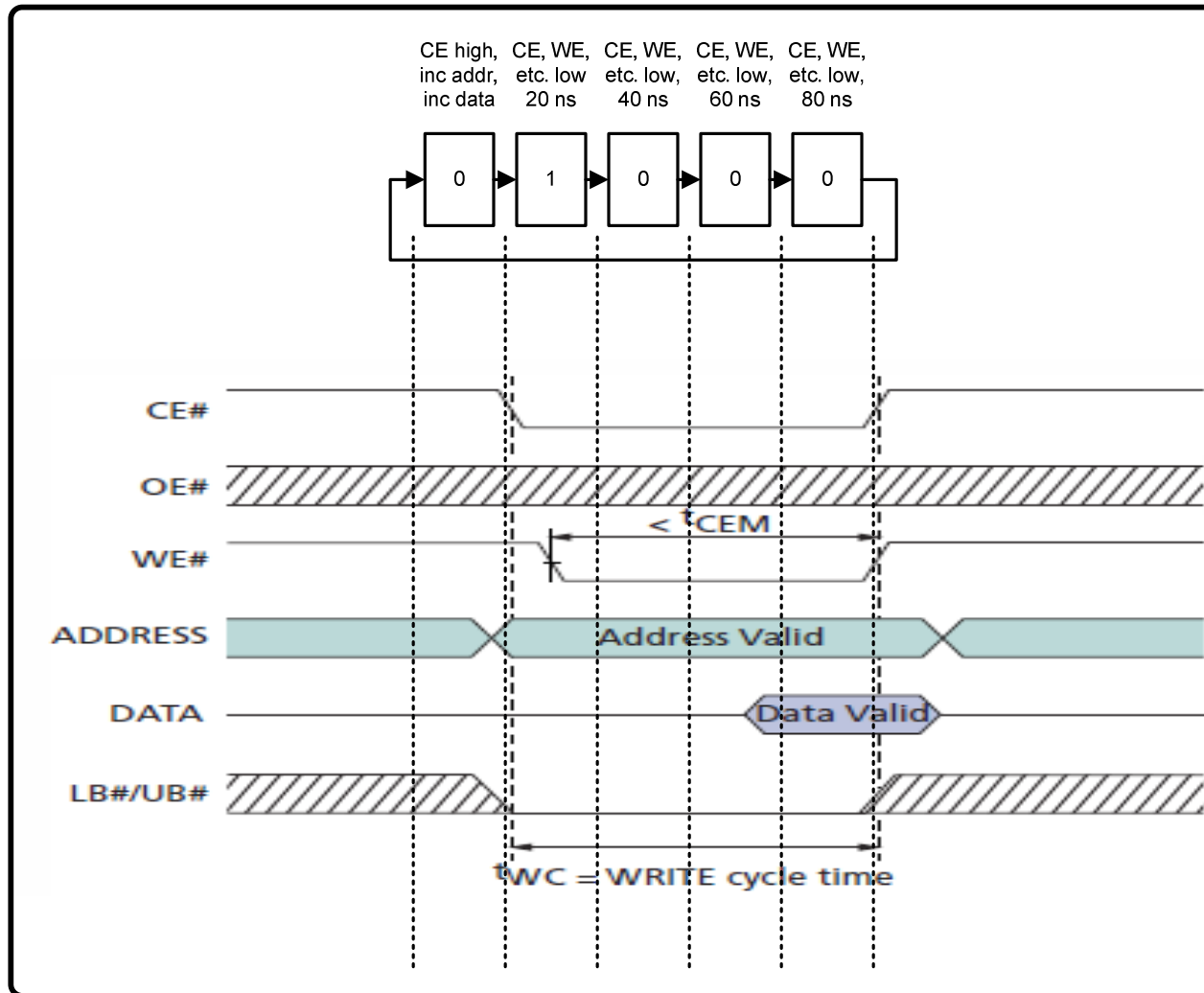


# SRAM Interface Lab

- This lab will create a test interface to the 16 MB RAM available on the Nexys2 board
  - On asynchronous reset (BTN3), load the first 256 memory locations with a preset pattern
  - Afterwards, allow a user at the board to check the memory values on the seven segment display using the slider switches and push buttons

Address	Data Value
0x00	0xA500
0x01	0xA501
0x02	0xA502
	...
0xFF	0xA5FF

# Suggested Technique For Writing Memory



# Suggested Technique for Reading Memory



Note: you may presume that the user does not change the address while pressing BTN0

- After the data is loaded, the user should be able to read the values stored in memory
  - The slider switches will set the current address to read from
  - Pressing BTN0 should perform a memory read
  - The result of the last read should be displayed on the seven segment display...
  - *...unless* the user is pressing BTN1 – then the current address on the slider switches should be displayed.